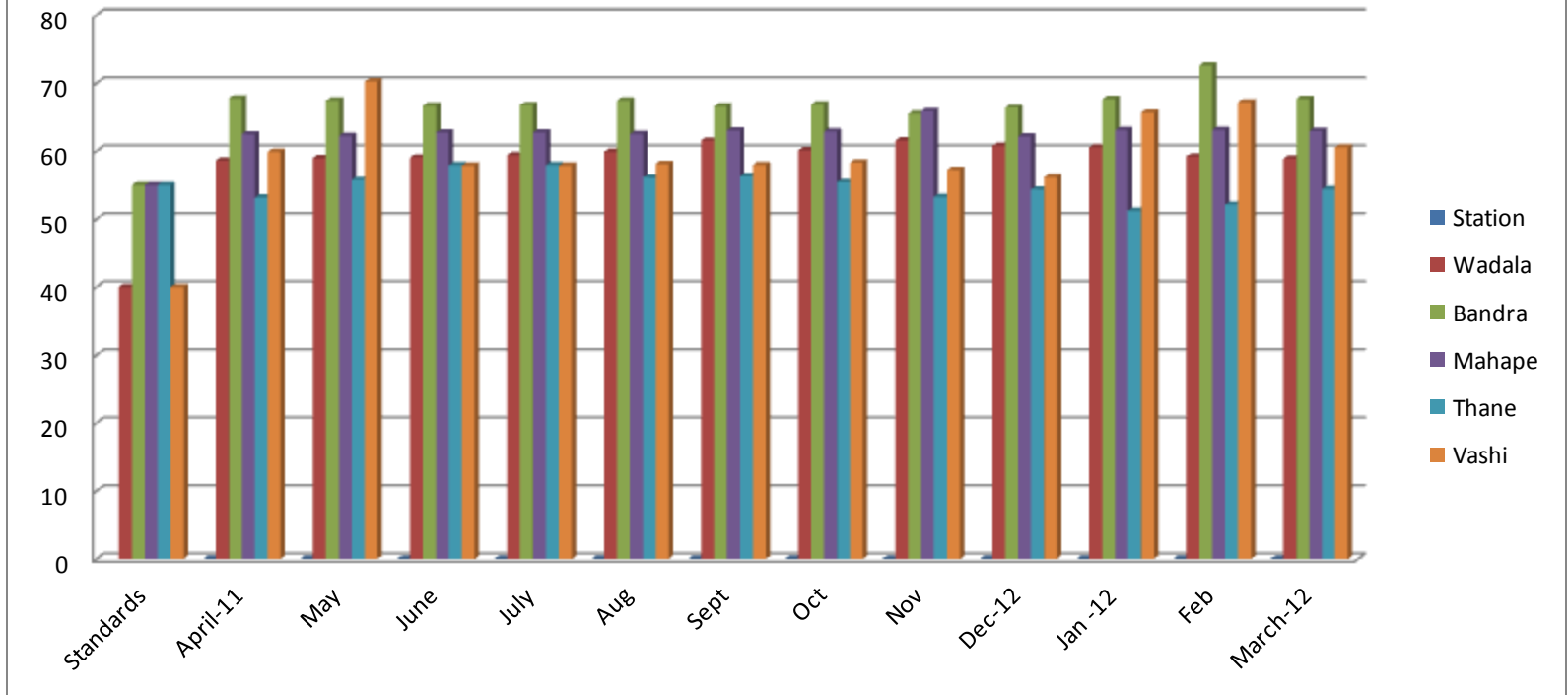


## Ambient Noise Levels During April'2011 to March"2012 Night time dB(A) Leq



Note: 1. Monitored by Continuous Ambient Noise Monitoring Stations (CANMS).

2. Day time: 6am to 10pm, Night time: 10pm to 6am

3. Category: Wadala(Resi/Silence),Bandra(Comercial),Mahape(Industrial),Thane(Commercial),Vashi(Resi/Commercial)