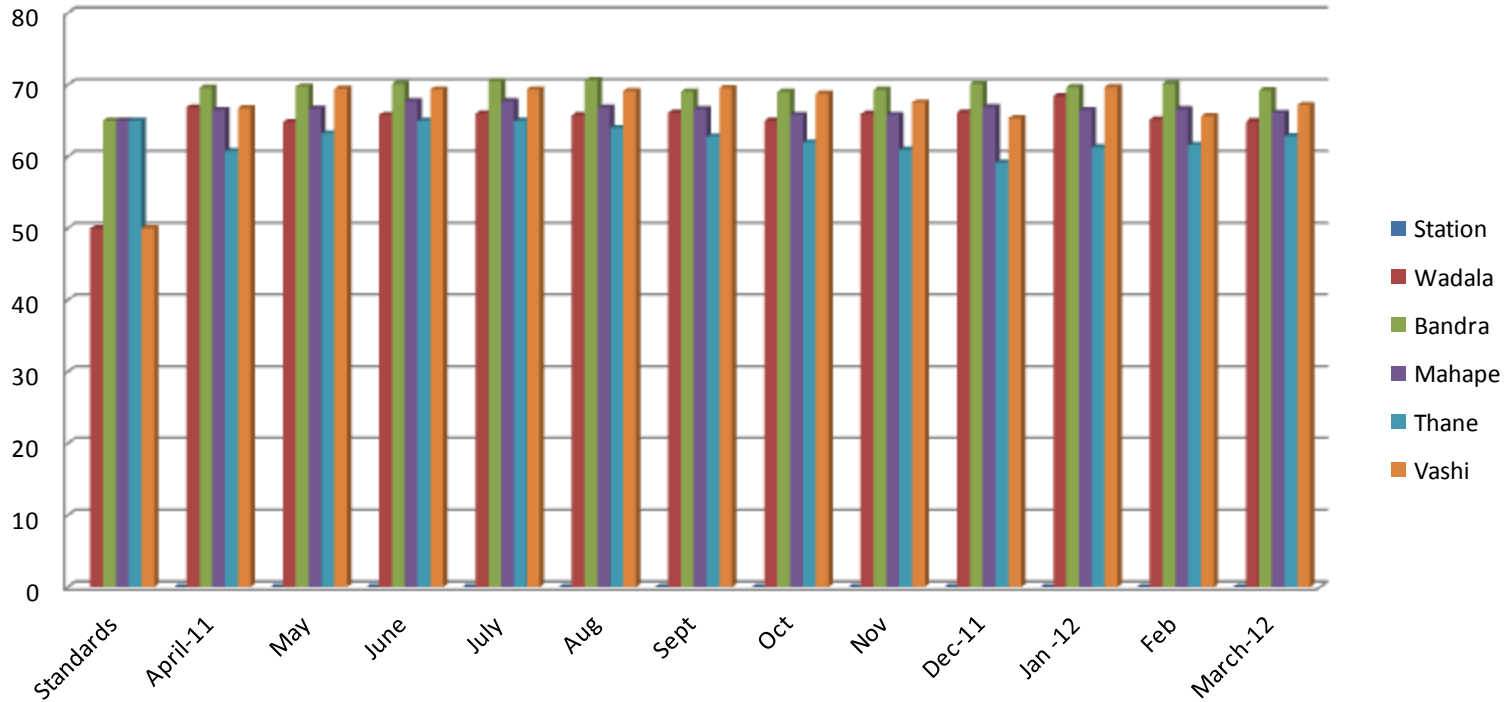


## Ambient Noise Levels during April'2011 to March'2012

### Day time dB(A) leq



Note: 1. Monitored by Continuous Ambient Noise Monitoring Stations (CANMS).

2. Day time: 6am to 10pm, Night time: 10pm to 6am

3. Category: Wadala(Resi/Silence),Bandra(Comercial),Mahape(Industrial),Thane(Commercial),Vashi(Resi/Commercial)